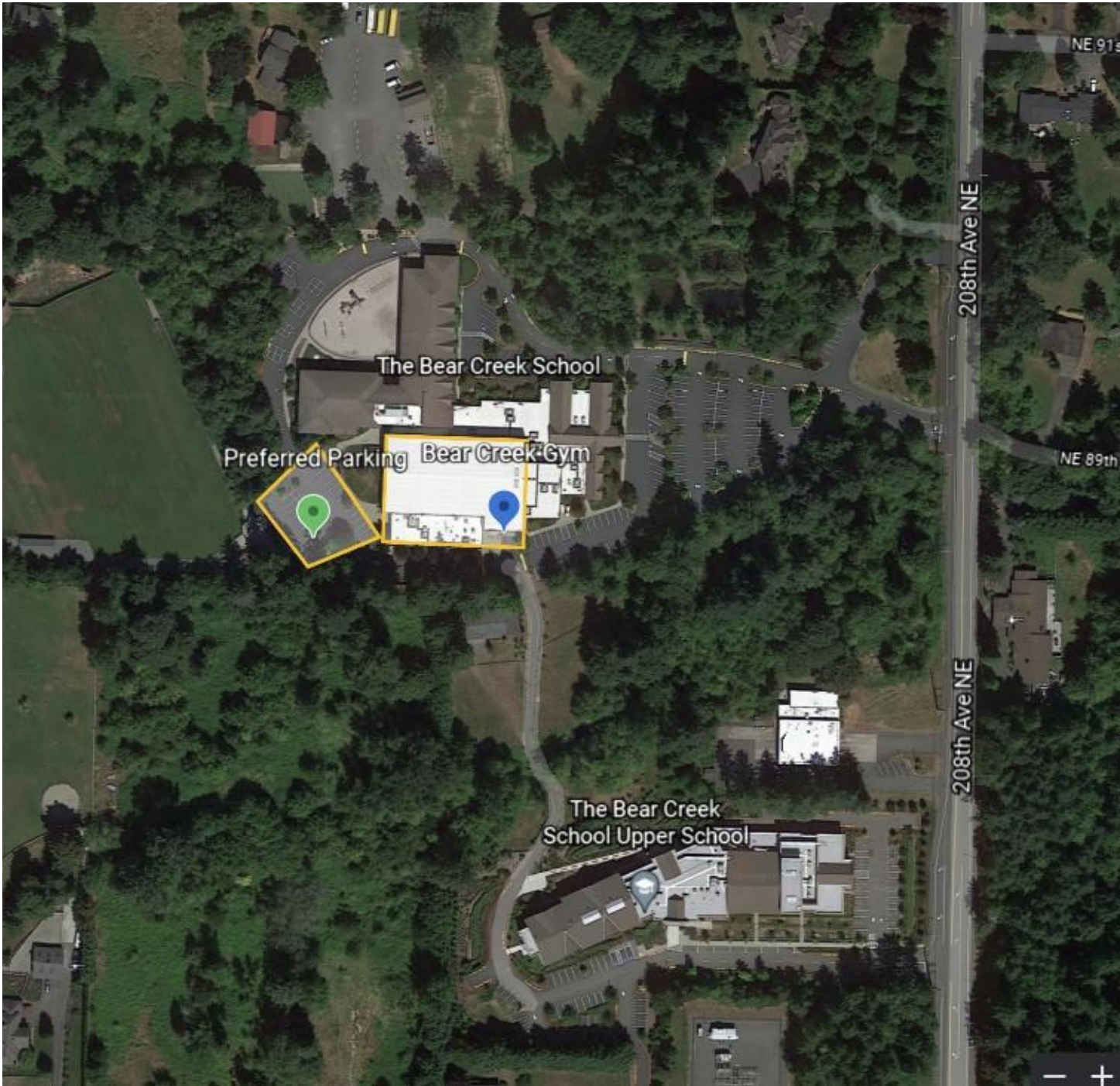


# BEAR CREEK

If preferred parking lot is full, park anywhere else and walk to gym entrance marked with arrow





# BUSH

There is a gym entrance connected to the parking garage (enter from **Harrison**).

Street parking is free with decent availability on **Republican**.

The main gym entrance is on the Republican side of the building.

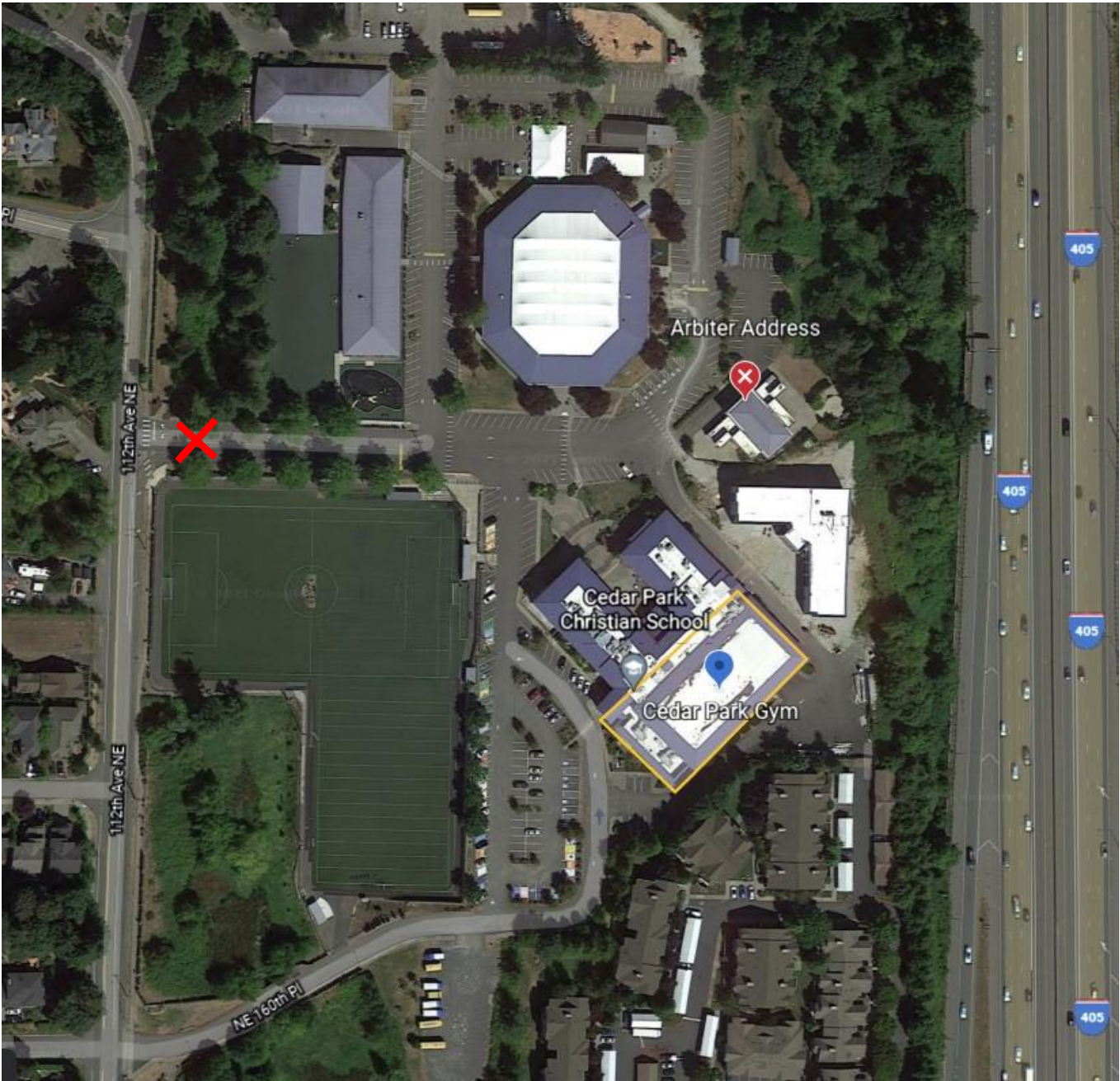




# Cedar Park Christian

The address in Arbiter takes you to the chapel – the gym is up the hill to your right if you enter at the red x.

If you enter on 160<sup>th</sup> find any parking you can and enter through main doors.





# EASTSIDE PREP

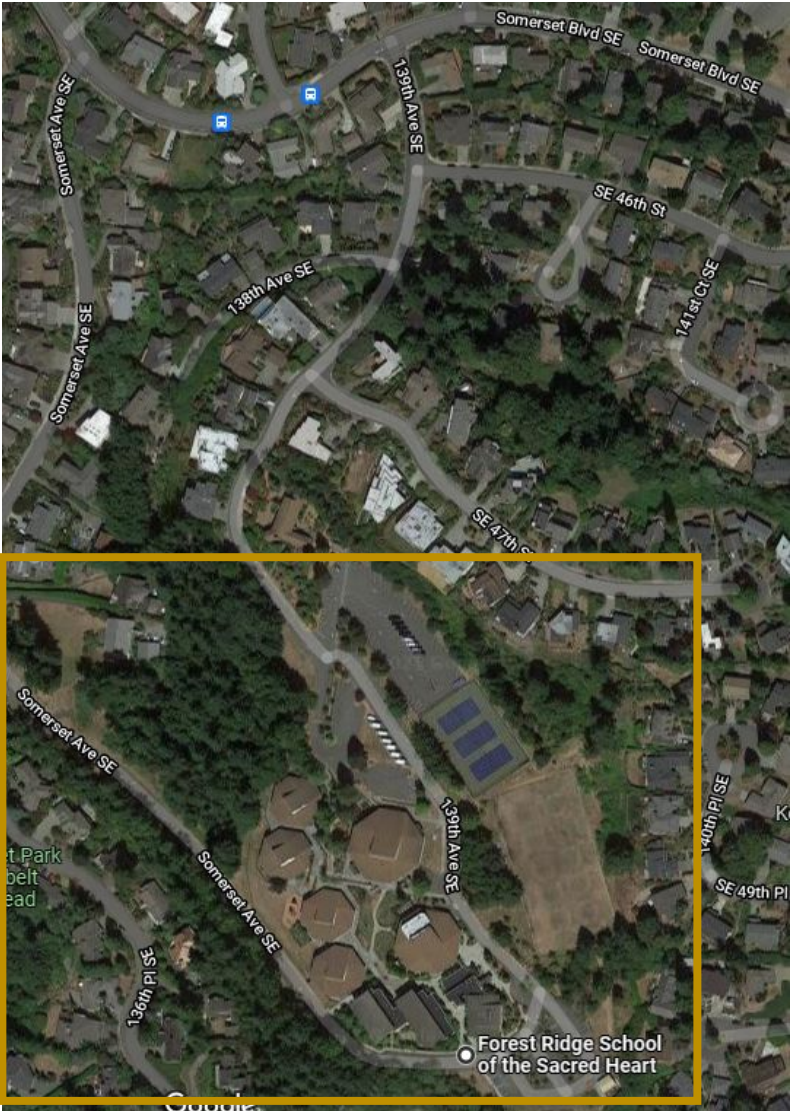
Gym is located on the 3<sup>rd</sup> floor.





# FOREST RIDGE OF THE SACRED HEART

Take 139<sup>th</sup> Ave from Somerset Blvd (yellow)  
not Somerset Ave (red)

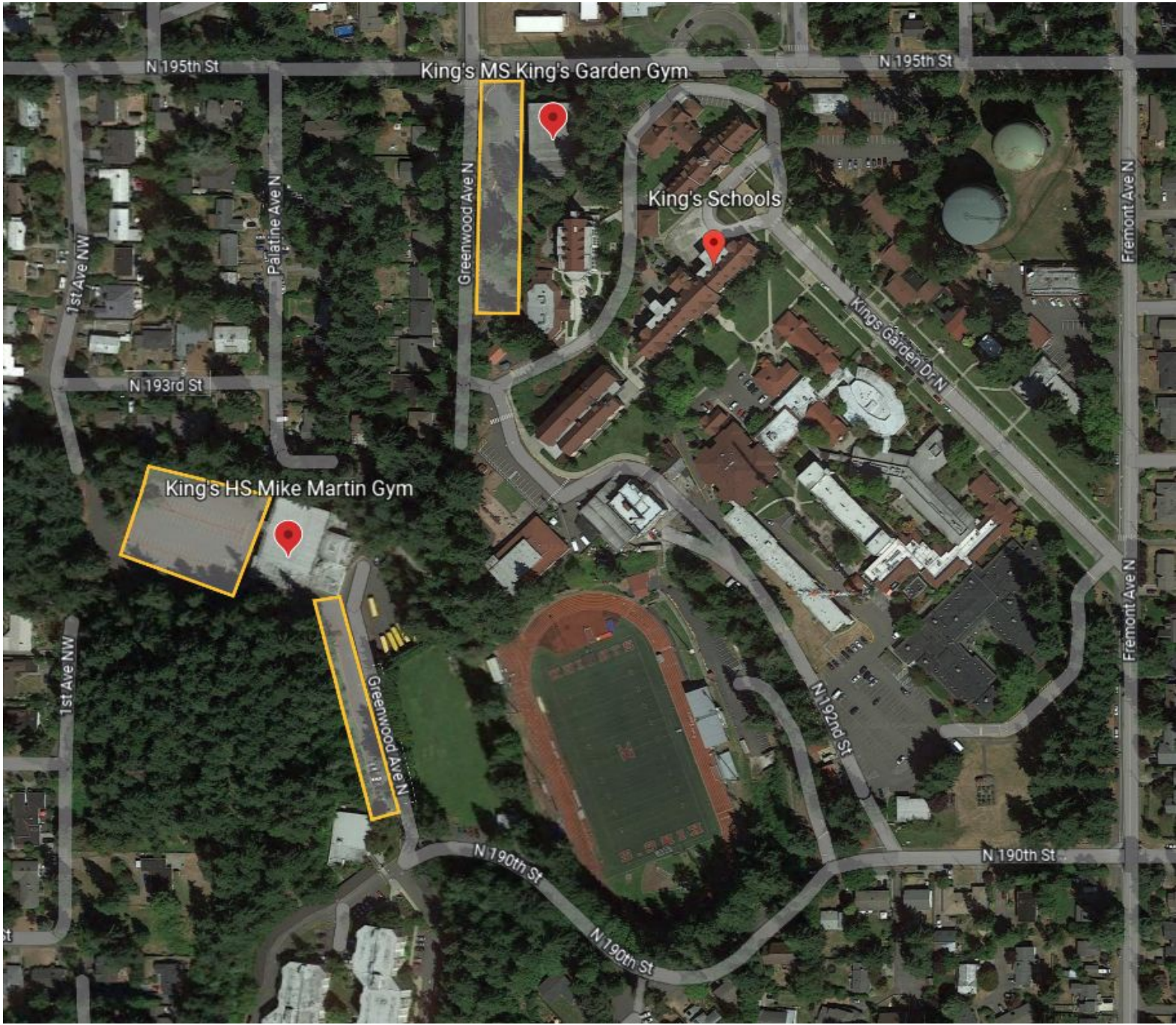




# KINGS

For King's Garden Gym (MS matches) – parking lot entrance is from Greenwood (NOT 195<sup>th</sup>)

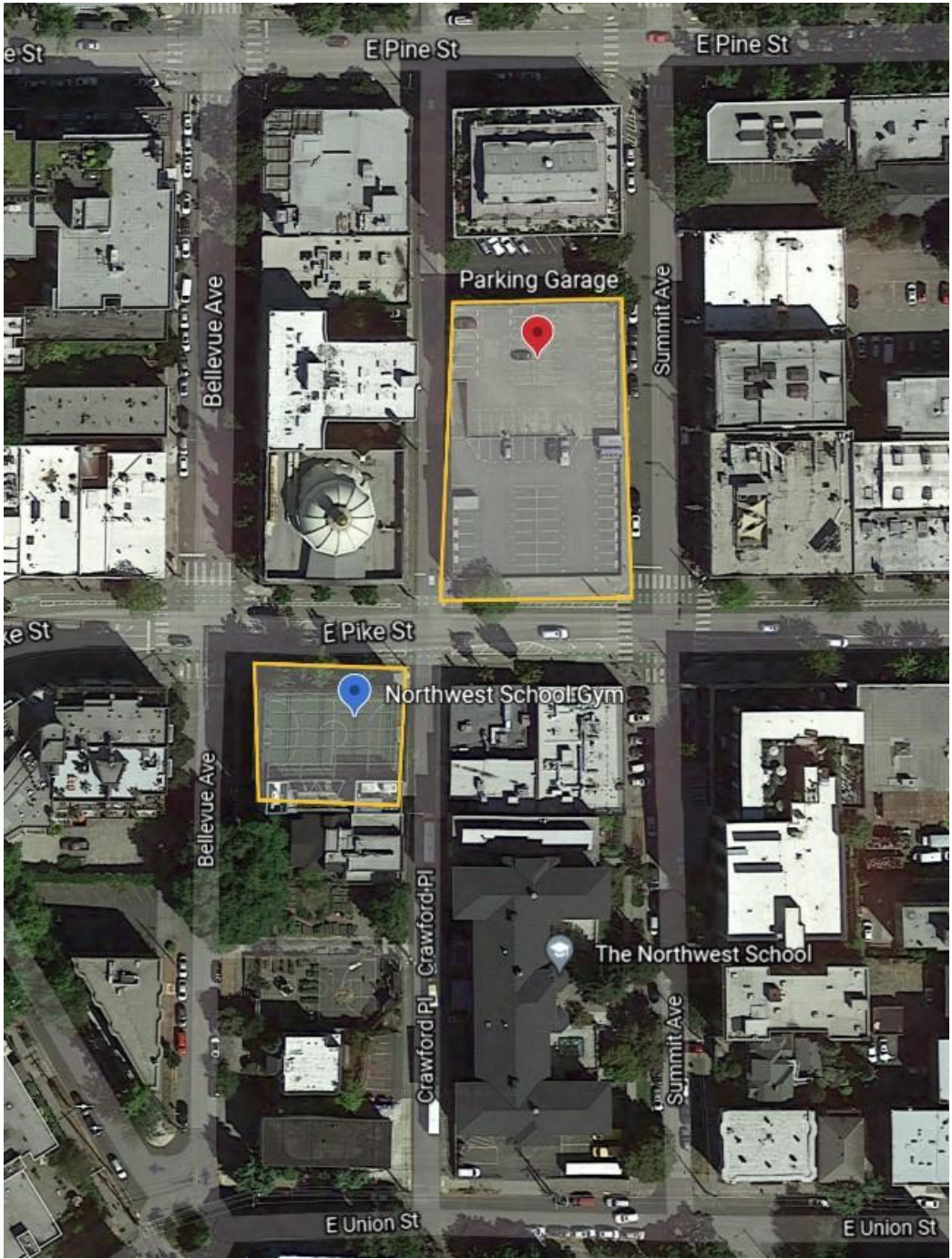
For Mike Martin's Gym (HS matches) – follow 190<sup>th</sup> and keep right onto Greenwood for the parking lot.  
(?? Sorry, that's as much detail as we have.)





# THE NORTHWEST SCHOOL

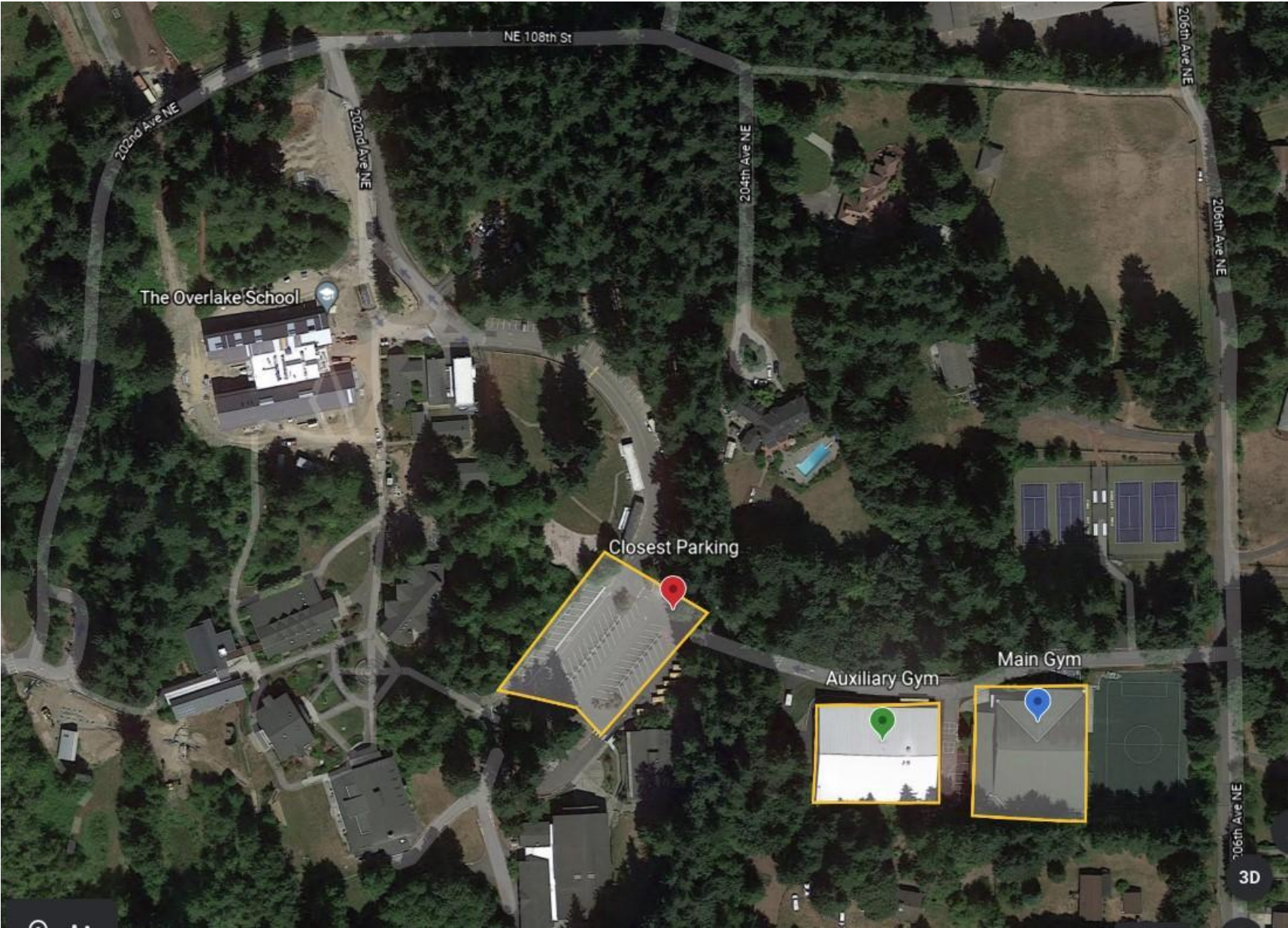
Parking garage address is Pike Street, but enter from Summit.  
Garage closes at Midnight during the week and 2am on weekends.





# OVERLAKE

Main gym and Auxiliary gym  
("Field House") are up the hill  
from the closest parking lot.



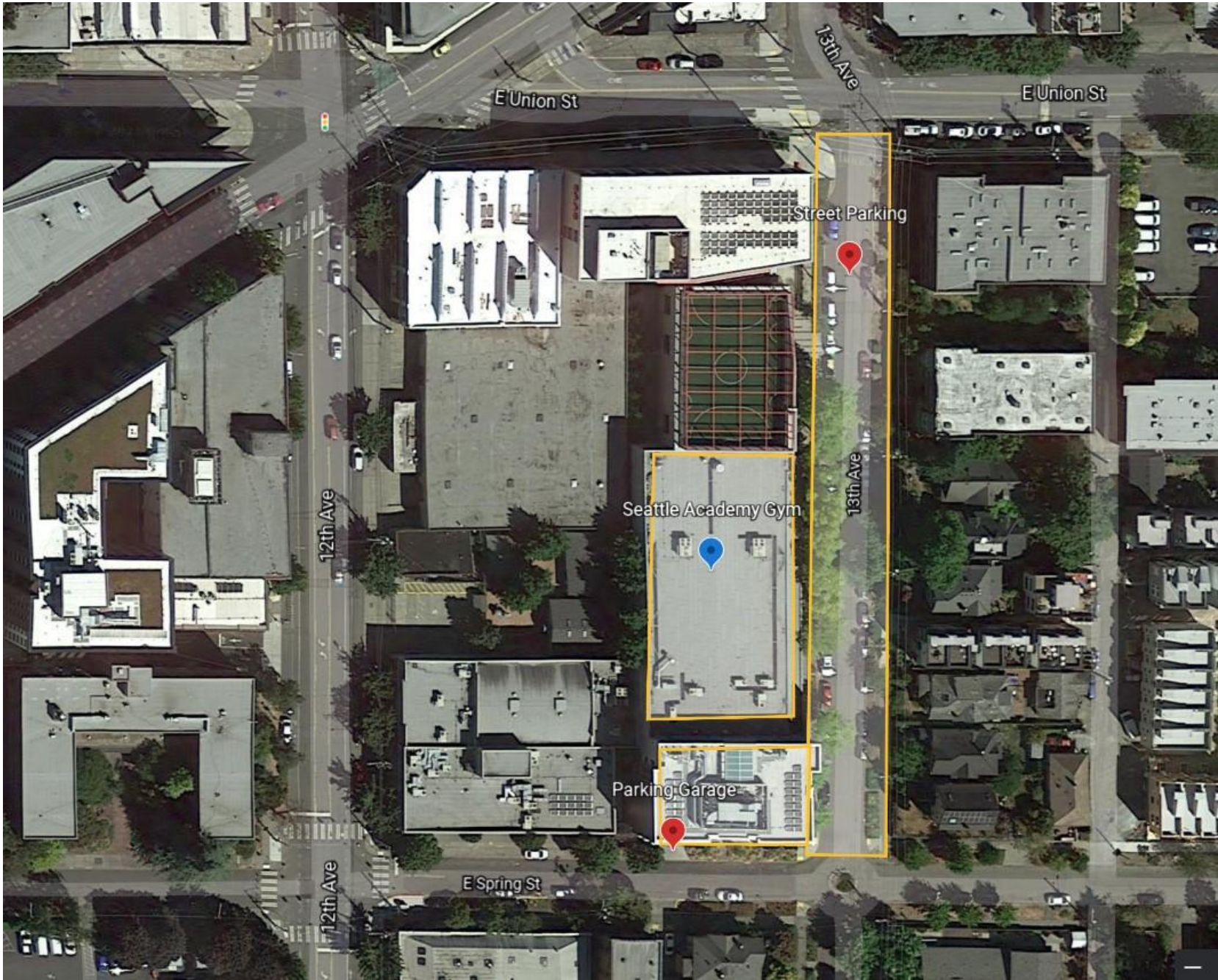


# SEATTLE ACADEMY

If you can, try to find street parking on 13<sup>th</sup>.

Otherwise, you can use the parking garage (though you'll likely need to find someone to let you in). If elevator is locked, you will still need to walk around to the front gym entrance.

To get back down to parking garage, use the elevator by the front gym entrance down to P.





# 917 E YESLER WAY

The address on arbiter is for the school. They do not have a gym so play at the community center.

At this time, no one has been here yet – if you have been here and have more information please let Salima know.





# UNIVERSITY PREP

The parking lot is “reserved” during the school day but not after school.

If lot is full, there is often street parking on 25<sup>th</sup> or 80<sup>th</sup>.

Gym entrance is down a flight of stairs.

